



fonderiacorrà 

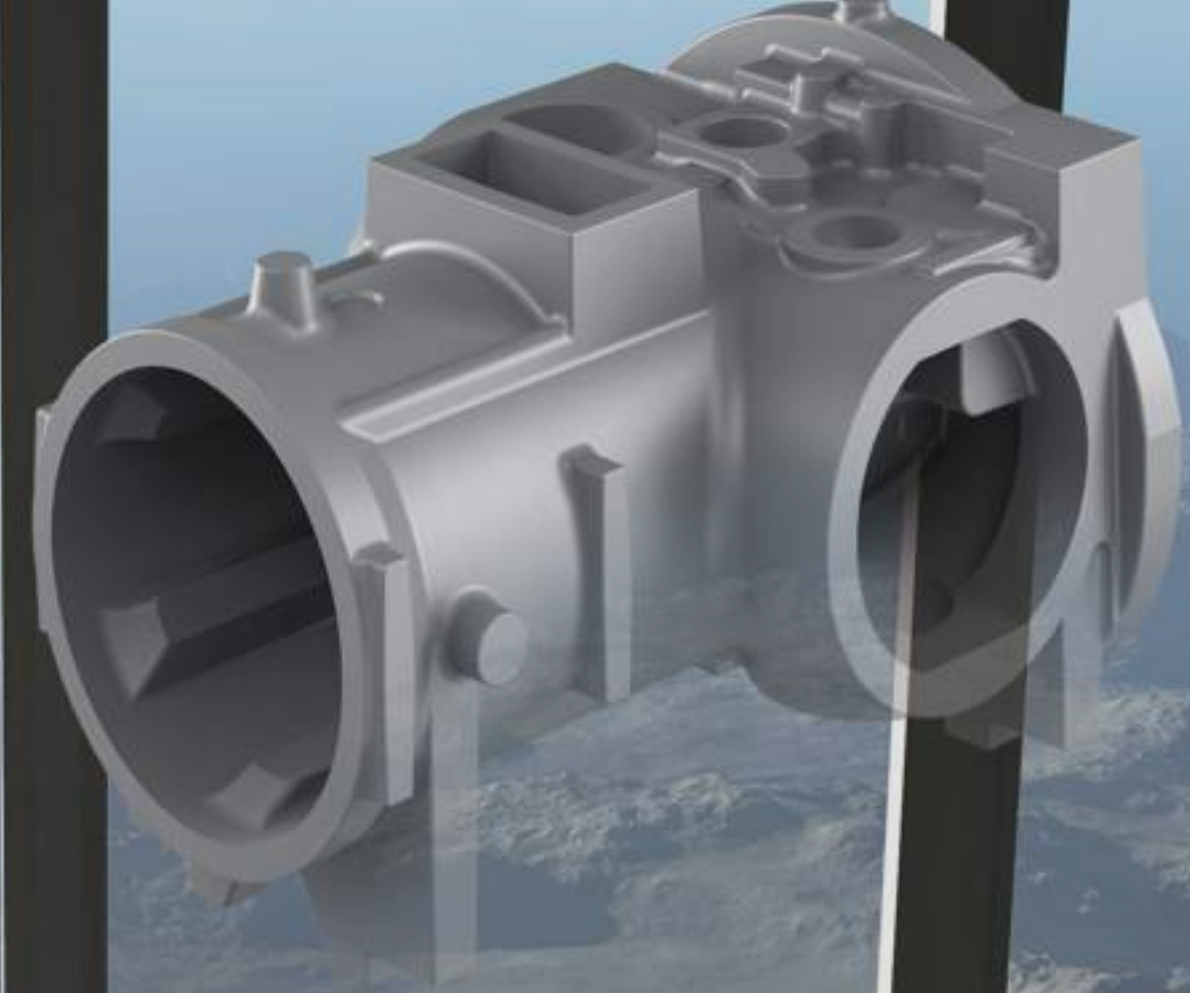
- 2 0 2 6 -



We mould our metal into all sorts of SHAPES, making cores of products for sectors we know well

The material of your ideas





**That's
how you
become
great**

We put the
LARGEST
core-making
facility in Italy
at your
service

OUR STORY HAS DEEP ROOTS

1946

Our company was established by Antonio Corrà and his brothers. It was initially specialized in the production of lamellar graphite cast iron.

1988

Full ownership was transferred to Antonio Corrà, who, helped by his son Massimo, started renovating and building up the company.

2010

A new plant is acquired in Montebelluna, which is specialized in the production of spheroidal graphite cast iron. This addition leads to an important turnover growth in 2015.

2020

Implementation and expansion of an in-house finishing department through the merger of Finko Srl and Pani Srl in the Thiene plant.

2026

Our company is continuing its work thanks to the commitment of highly experienced personnel with Antonio Corrà's family working with the same passion.

Where you can find us



THIENE PLANT
50.000 m²
(of which 26.000 m² indoor)

MONTEBELLUNA PLANT
30.000 m²
(of which 17.000 m² indoor)



LOREGGIA MACHINING SHOP
2.000 m²

EMPLOYEES

~ 300 PEOPLE in TH
~ 100 PEOPLE in MB



**UP TO
12-16 HOURS
OF DAILY
PRODUCTION**

Come and have a brief look ..

CORES DEPARTMENT

Core production up to
300 kg

Using 18 different core
shooters with both
horizontal or vertical
core box division



FURNACE DEPARTMENT

3 cold-blast and 1 hot-blast
cupolas ;
3 JUNKER holding furnaces;
Two automatic metal
treatment and distribution
system;
4 different Press-pour casting
furnaces



MOULDING DEPARTMENT

HWS greensand line for
3 different flask:
1300x900x450+400
(Montebelluna plant)
1220x920x470+420
(Big Thiene plant)
860x660x300+300
(Small Thiene plant)



.. at our full integrated foundry ..

SAND BLASTING DEPARTMENT

Two different blasting methods to meet all requirements:

DISA belt conveyor system blasting
COGEIM and BANFI type "cluster" system blasting



AUTOMATED WAREHOUSE

A full automated warehouse with a storage capacity of 10.000 standard pallets. Thanks to its three "traslo" and two shuttles it allows 50 loads and 50 unloads per hour (100 transactions/hour)



LOGISTIC DEPARTMENT

4 trucks for external transport;
up to 40 internal carts and forklifts;
an office entirely dedicated to shipping for fast and over-the-top transport



.. until you visit us in person

DEBURRING DEPARTMENT

9 MAUS for automatic
deburring with three
different dimensions

20 manual deburring
stations with highly
competent staff



PAINTING DEPARTMENT

A department that
provides a rust-proof
painted castings in
different colours to
choose from
(e.g. red or black)
via immersion tanks



MACHINING DEPARTMENT

4 Lathes, 3 Horizontal
Machining Centers (4-
Axis), 4 Multipallet
Machining Centers and 1
Metrology Room

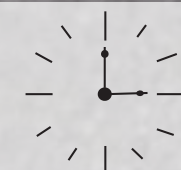


**Two plants so
that you can
always be
FIRST**

We don't like waiting or making you wait for no good reason.

That is why we have created a single management centre so that we can offer you a more efficient and orderly organisation of the work to be done.

By doing this we have eliminated downtime between different types of processing and can therefore deliver your order faster as well offer you greater flexibility and reliability in the processes, a greater product range and constantly high quality.



We cut waiting times

THIENE PLANT

LAMELLAR GRAPHITE CAST IRON UP TO 550 KG

FROM EN-GJL-200 TO EN-GJL-350

40,000 t production capacity

CORE-MAKING

**14 core shooters with horizontal or vertical core box division
Core production up to 300 kg**

MELTING FURNACES:

**3 cold-blast cupolas with melt rate 20 t/h
1 JUNKER holding furnace with capacity 95 t
1 automatic metal treatment and distribution plant
3 PRESS-POUR casting furnaces with capacity 8 t**

MOULDING

**HWS greensand line for flasks
1220x920x420+470 mm**

**HWS greensand line for flasks
860x660x300+300 mm**

SPHEROIDAL GRAPHITE CAST IRON CASTINGS UP TO 550 KG

FROM EN-GJS-400-18LT TO EN-GJS-800-2

40,000 t production capacity

CORE-MAKING

**6 core shooters with horizontal or vertical core box division
Core production up to 150 kg**

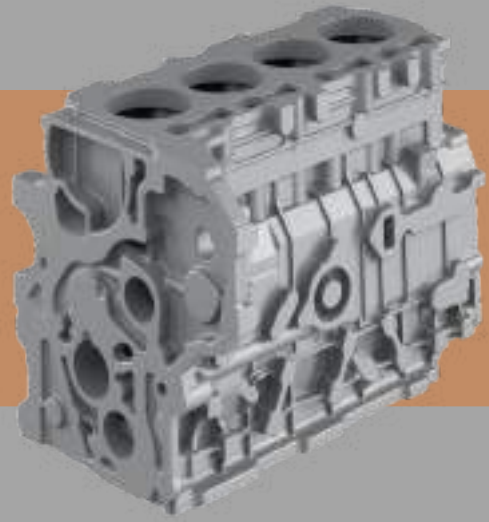
MELTING FURNACES:

**1 hot-blast cupola with melt rate 20 t/h
2 JUNKER holding furnaces with capacity 95 t
1 automatic metal treatment and distribution plant
1 PRESS-POUR casting furnace with capacity 12 t**

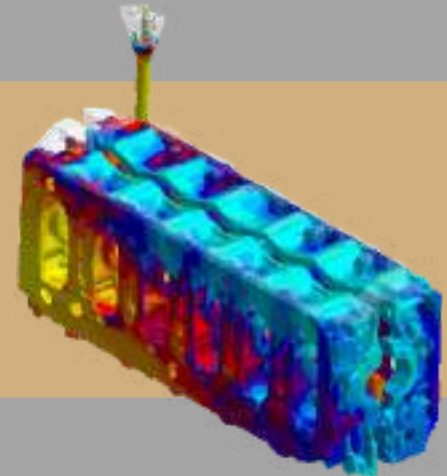
MOULDING

**HWS greensand line for flasks
1300X900X400+450 mm**

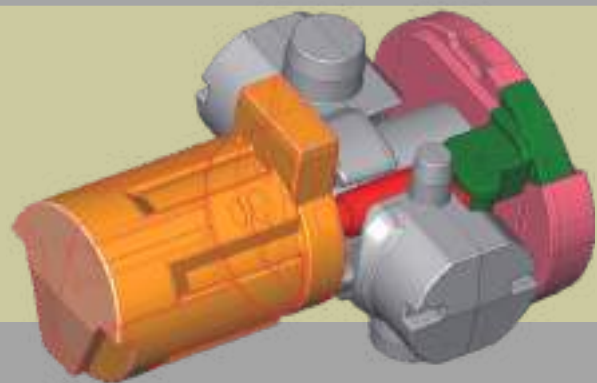
MONTEBELLUNA PLANT



All the assurance that comes with a product made completely in-house

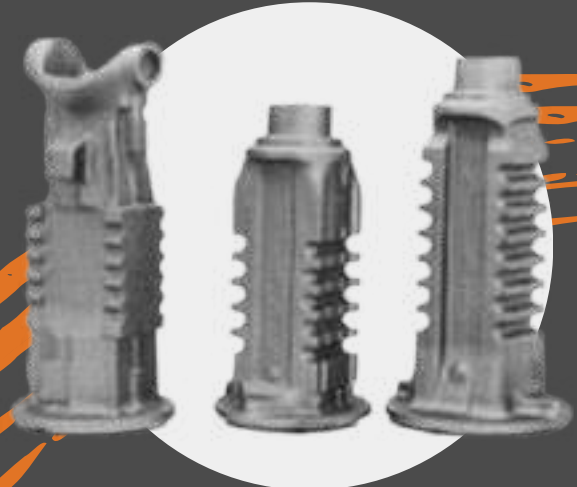


PRODUCT ENGINEERING:
4 CAD stations
2 MAGMA soft casting process simulation stations



We take care of every single stage in the process to ensure full control over production and have the possibility of optimizing every detail in the machining

**True passion is
incorporated in the core
of every PRODUCT**



Axel arms



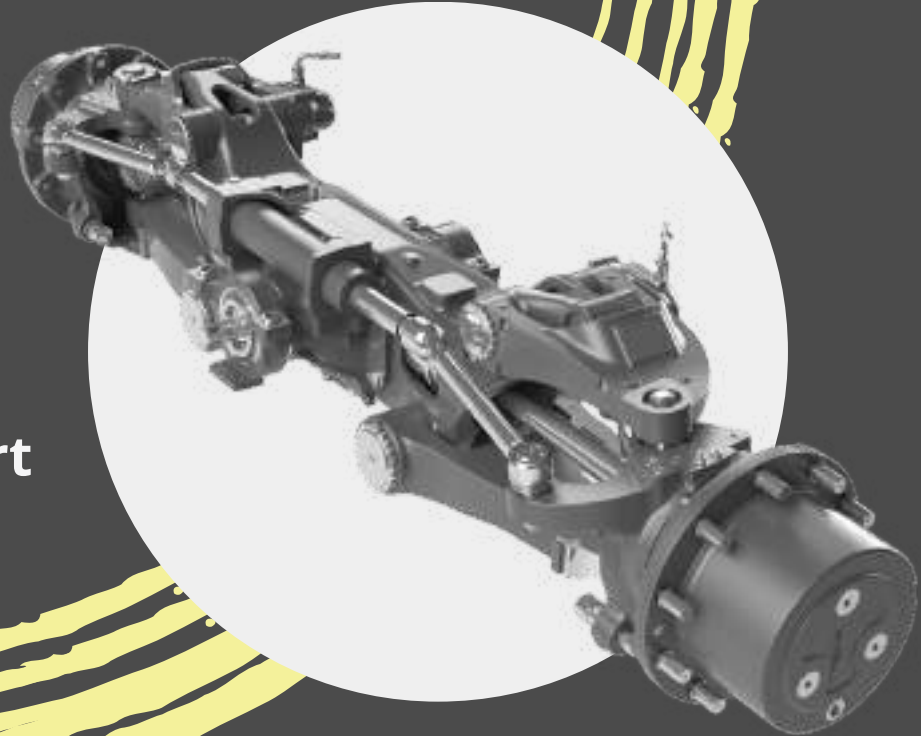
Oleodynamic distributor



Front support



Axel housing



Rear axle



Lift motor housing



Steering axle



Arm support

Application

Sectors



**Agriculture
Machinery**



**Valves
and Pumps**



**Air Compressor
and Refrigeration**



**Industrial
vehicles**



**Lift and
Elevators**



**Maritime
transport**



Railways



**Construction and
Mining Equipment**



**Gas engines
and Diesel**



**Wind
Energy**



Boundless experience
Beyond all limits



Montanari Group



OUR CERTIFICATIONS



ISO 9001: 2015
FROM 12/04/24
TO 21/02/27

ISO 14001: 2015
FROM 16/04/24
TO 23/03/27



TO ALWAYS BE AT THE TOP OF QUALITY

Feel free to visit us on:

 www.fonderiacorra.com 



THANK YOU !